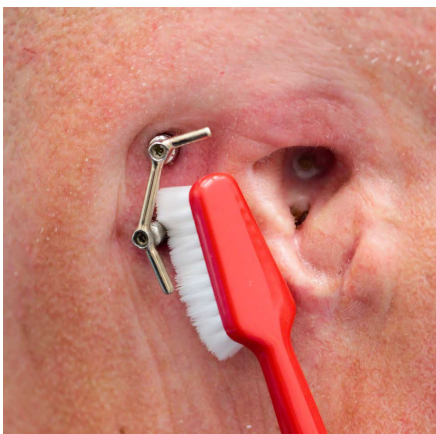


## Home care for implant retained bar connection



Moisten the tissue around each abutment using a wet cotton tipped applicator with either saline solution or water. Leave the tissue wet for approximately one minute.

Using a fresh wet cotton tipped applicator, wipe around the abutments to remove any crusting or debris. Slide the cotton tipped applicator under the bar to access the tissue (see photo).



You may want to clean the tissue using the super soft brush provided. Moisten the bristles and gently brush the tissue using a side-ways motion (see photo). Do not poke the bristles into the space between the abutment and the skin



Once you are done cleaning, dry around the abutments using a dry cotton tipped applicator. This helps to remove any remaining crusting.

### Notes:

---

---

---

---

---

---

---

REC157-V02-10/25